

LONG SLEEVE ADD-ON

Hi! Thanks for purchasing One Thimble 13 or the ONE pattern.

Please enjoy the long sleeve by following the same instructions as for the short sleeve.

With the chart below, you will be able to predict the exact length needed for your model and add or remove length if needed.

Sleeve length: Distance from the center neck back over the top of the shoulder joint, along the outside of the arm, over the elbow to the prominent wrist bone, taken with the arm bent 90 degrees.

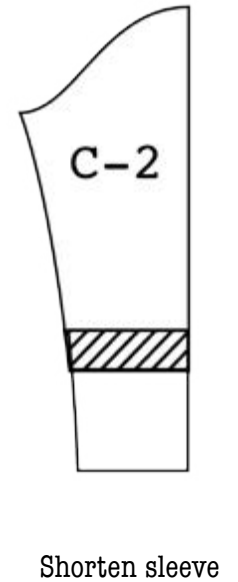
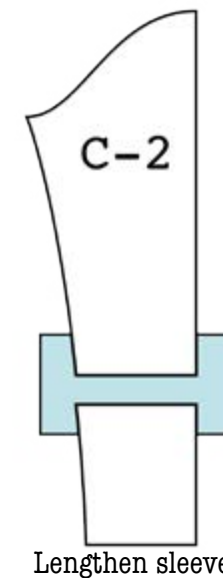
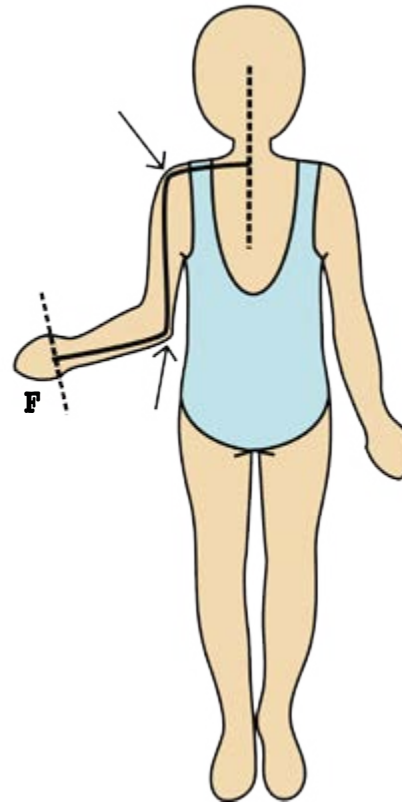
SLEEVE LENGTH

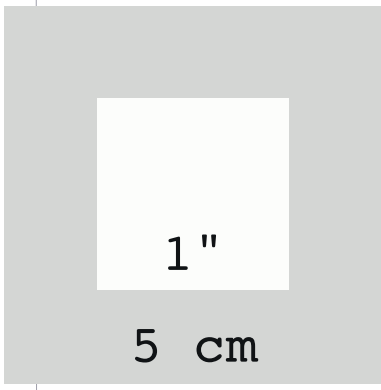
INCHES

Sizes	F-Cervical to wrist length (in)
12-18 m	15 5/8
2	17 1/2
3	18 5/8
4	19 3/4
5	20 7/8
6	21 7/8
7	23
8	23 3/4
10	24 5/8
12	26 1/4
14	27 5/8

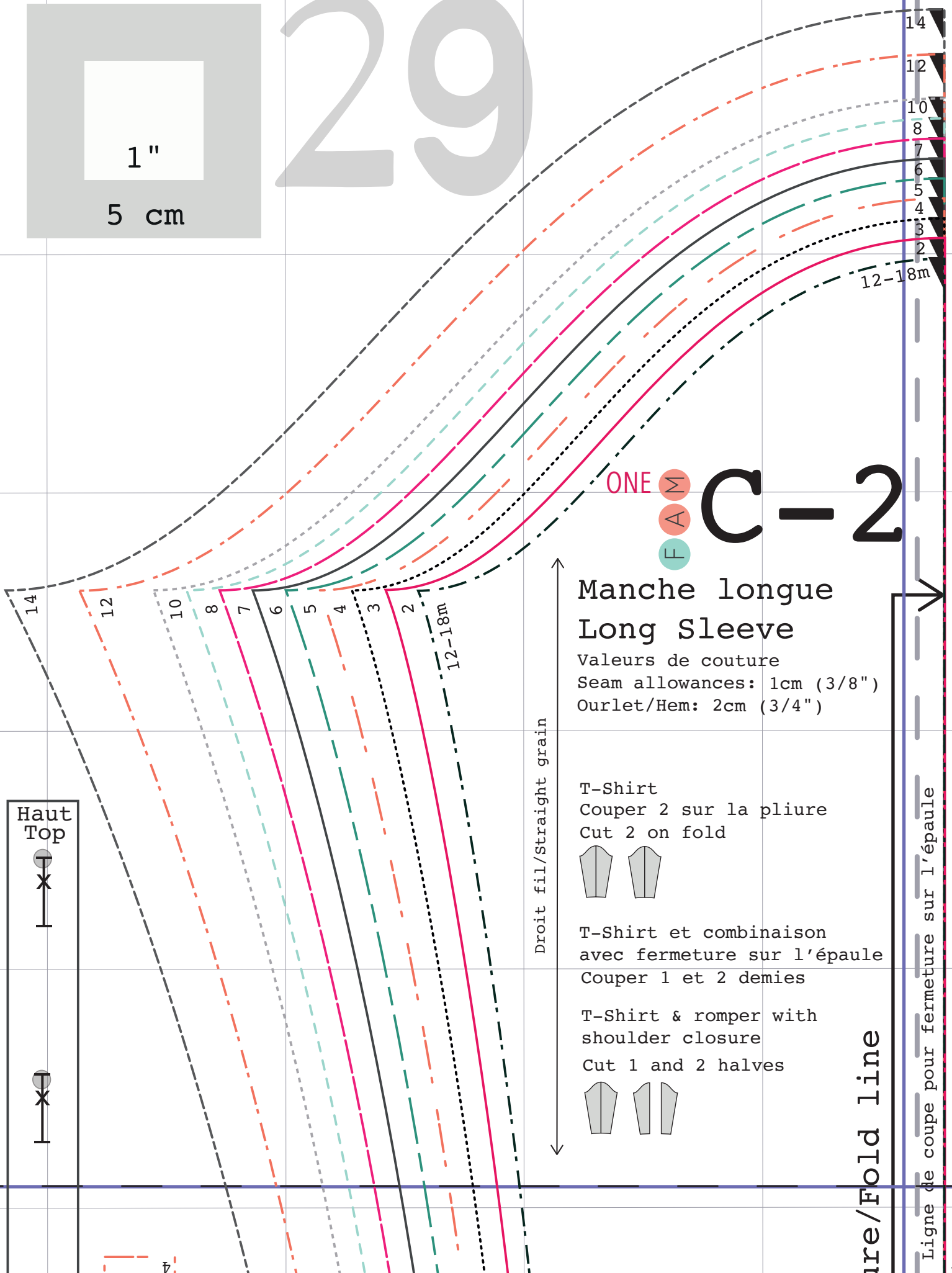
CENTIMETERS

Sizes	F-Cervical to wrist length (cm)
12-18 m	50
2	52
3	53
4	56
5	58
6	61
7	66
8	69
10	72
12	76
14	80





29

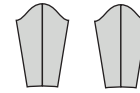


ONE
M
A
F
C-2

Manche longue Long Sleeve

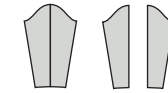
Valeurs de couture
Seam allowances: 1cm (3/8")
Ourlet/Hem: 2cm (3/4")

T-Shirt
Couper 2 sur la pliure
Cut 2 on fold



T-Shirt et combinaison
avec fermeture sur l'épaule
Couper 1 et 2 demies

T-Shirt & romper with
shoulder closure
Cut 1 and 2 halves



Droit fil/Straight grain

ure/Fold line

Ligne de coupe pour fermeture sur l'épaule

Cutting line for shoulder closure

Haut
Top



4

14
12
10
8
7
6
5
4
3
2
8m

Ligne de coupe pour fermeture sur l'épaule
Cutting line for shoulder closure

ONE
F A M
H-2
Patte de boutonage manche longue
Shoulder placket long sleeve
Tissu: Couper 2
Entoilage: Couper 2
Fabric: Cut 2
Interfacing: Cut 2

Haut Top

Haut Top

Haut Top

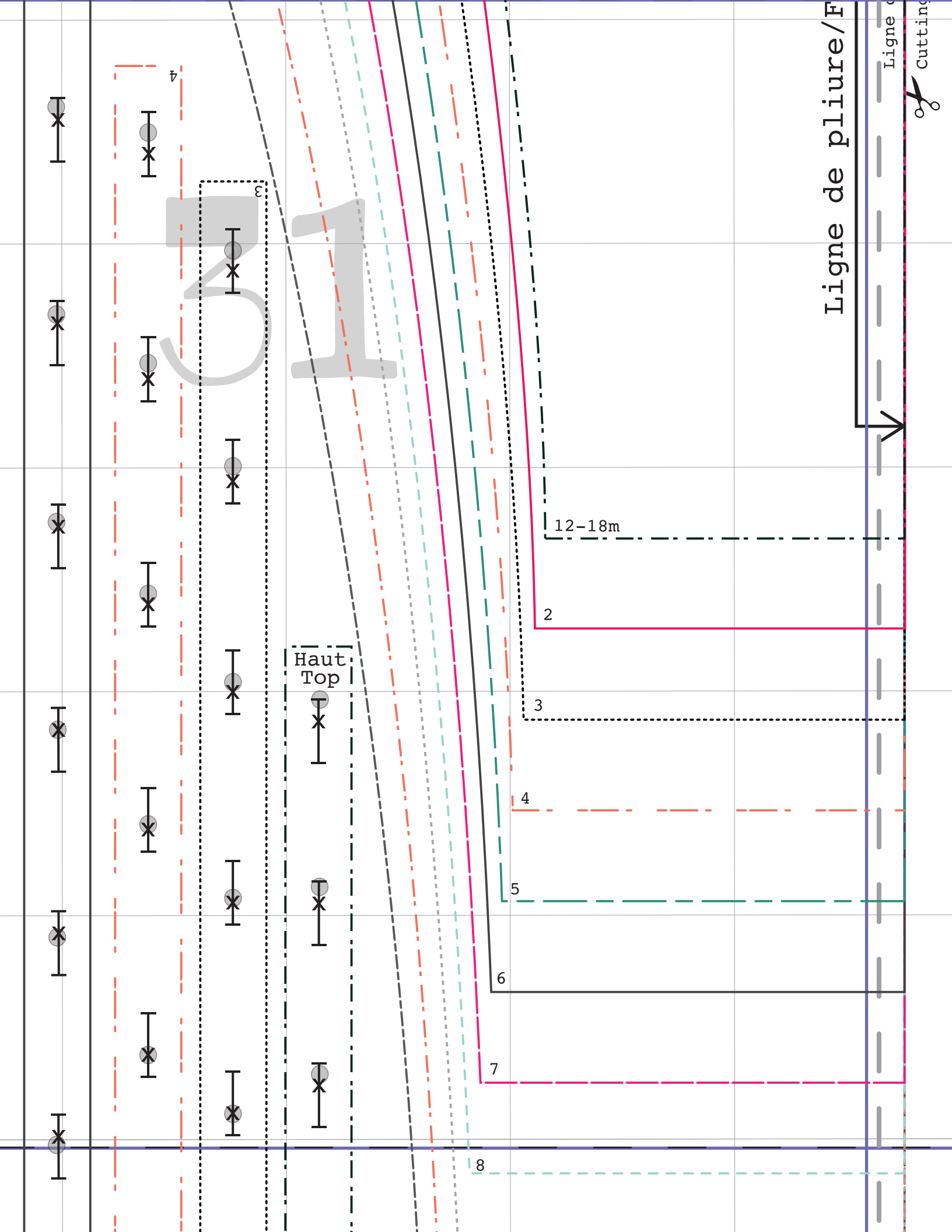
Haut Top

Haut Top

Haut Top

Haut Top





Ligne
Cutting



Droit fil/Straight
←→

12-18m

2

3

4

5

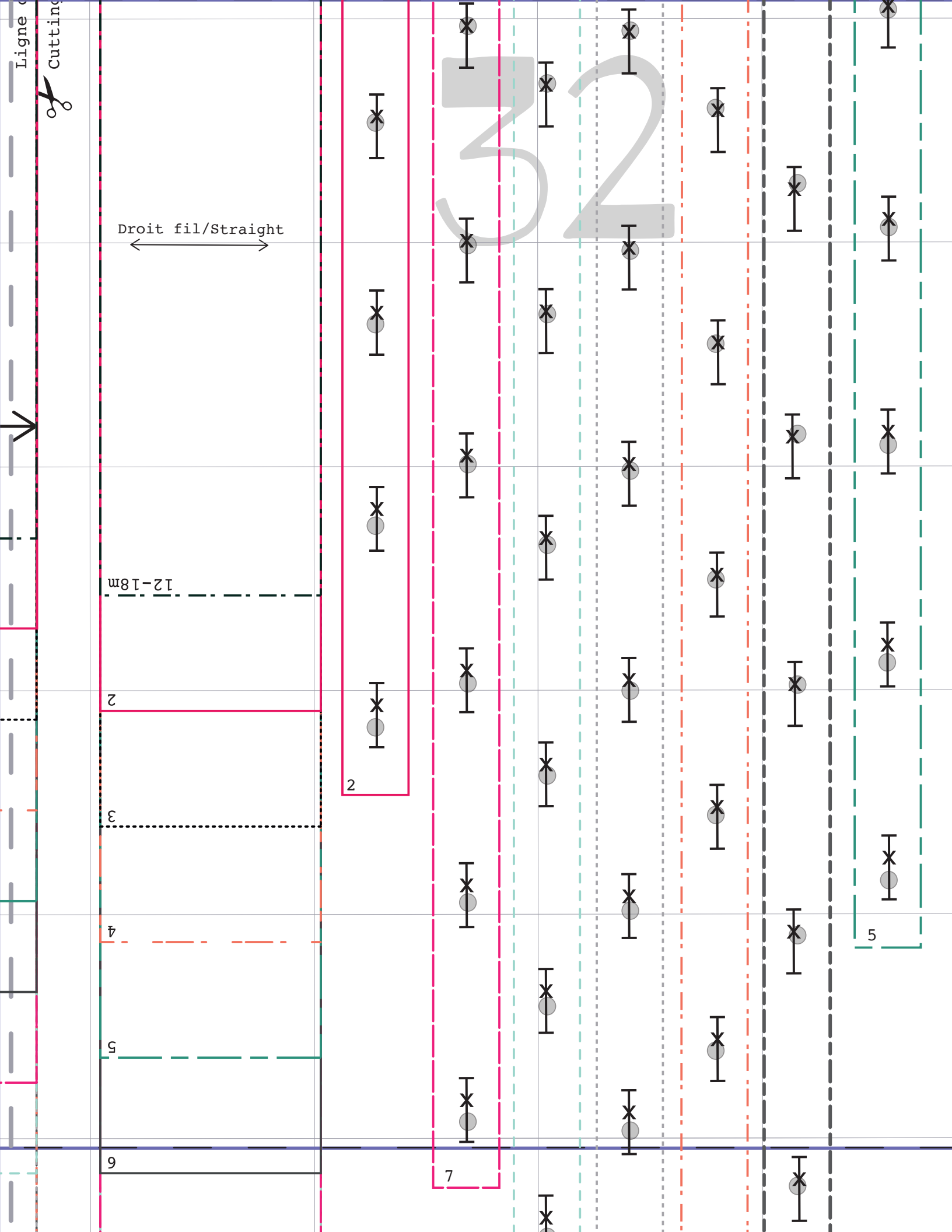
9

2

7

5

32



1

2

3

4

6

5

7

8

9

10

11

12

13

8

10

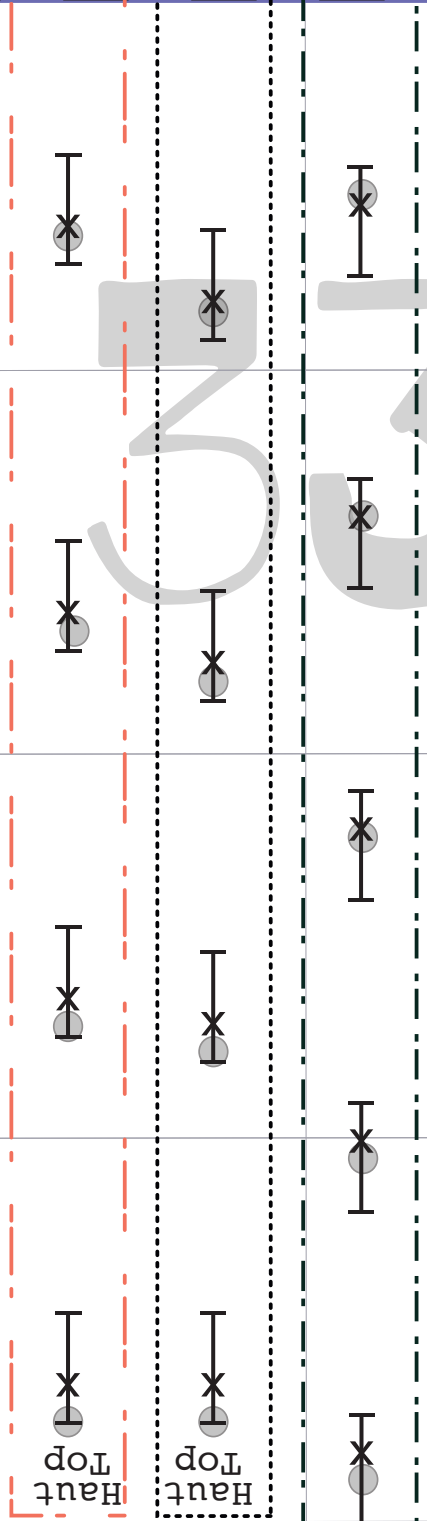
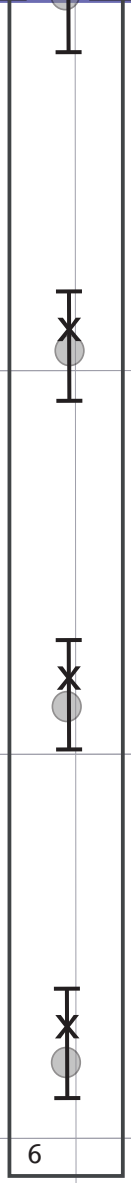
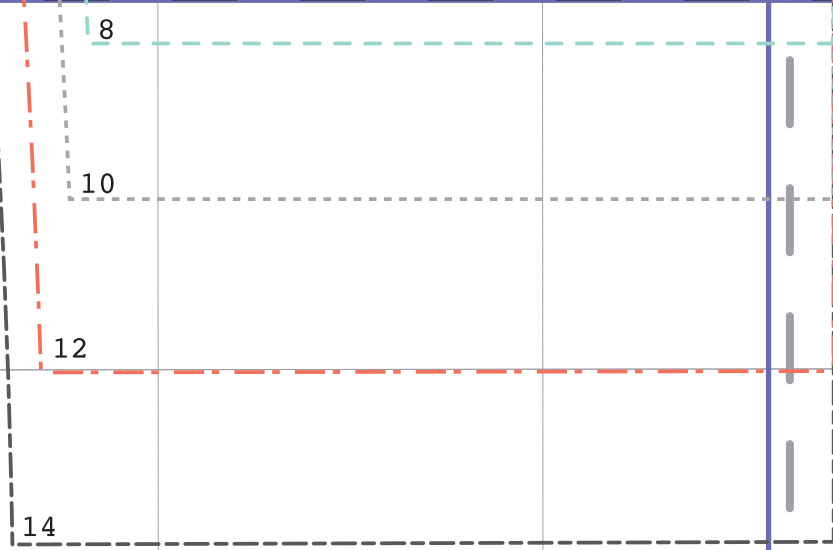
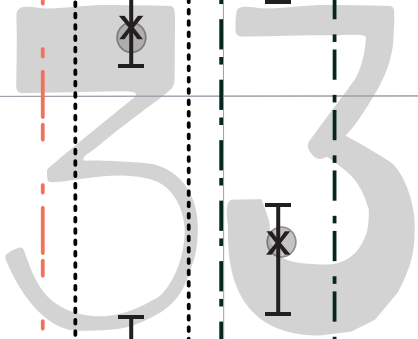
12

14

Haut
Top

Haut
Top

12-18m



9

7

8

8

8

10

10

12

12

14

14

34

